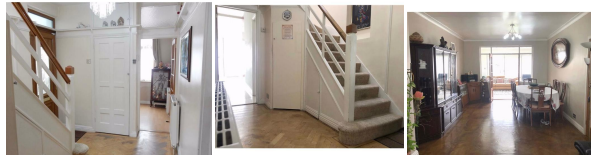


4 Bedroom Semi-Detached for Rent - Fixed Price £2,495 per month

Craneswater park, Southall, UB2 5RP



KEY FEATURES

- THROUGH LOUNGE • NORWOOD GREEN • PARKING • NEAR KHALSA PRIMARY SCHOOL

Description

A rarely available semi detached family home located on the ever popular craneswater park. Accommodation is spacious throughout and includes; entrance room, study, through lounge, open plan kitchen / breakfast room, ground floor shower/WC, utility room, further storage area, three bedrooms and family bathroom/WC. To the outside there is off street parking and private rear gardens. The sikh khalsa primary school and wolf fields primary are both just a short walk away. Early viewings are highly recommended.



Energy Efficiency

Energy Efficiency Rating			
Score	Energy rating	Current	Potential
92+	A		
81-91	B		82 B
69-80	C	71 C	
55-68	D		
39-54	E		
21-38	F		
1-20	G		



