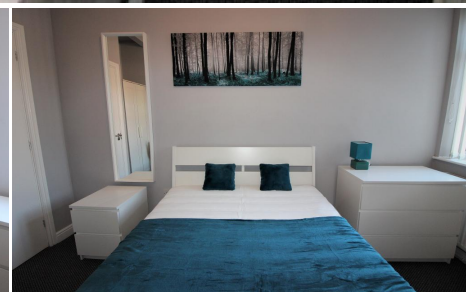
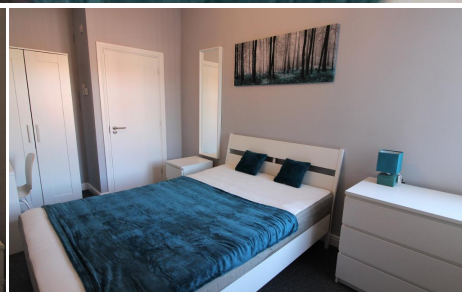
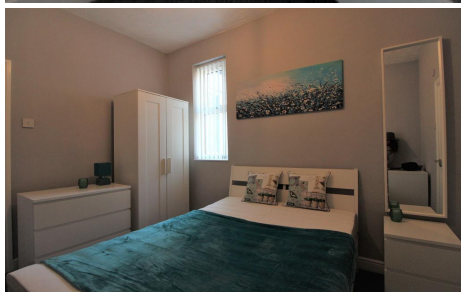


## 5 Bedroom Semi-Detached for Sale - Guide Price £250,000

Tootal Drive, Salford, London, M5 5ER



### KEY FEATURES

- FURNISHED • WELL DECORATED • GREAT LOCATION • HMO INVESTMENT • BIG LIVING ROOM / BEDROOMS • MODERN HOUSE • 11% YIELD

## Description

It is a 5 bedroom house, 2 bathroom and 1 reception rooms. The place itself is close to city centre. Schools, public transports and shopping centre. Well suited for a young family. Student HMO - approx 11% yield.

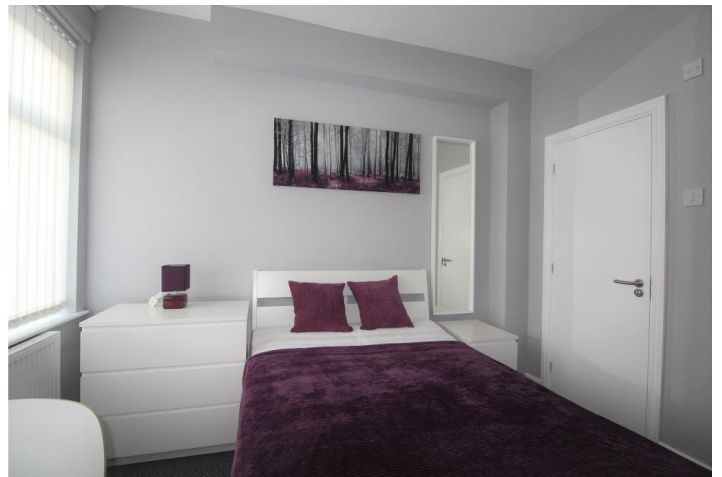
## Location

Eccles (Manchester) - 0.9 miles

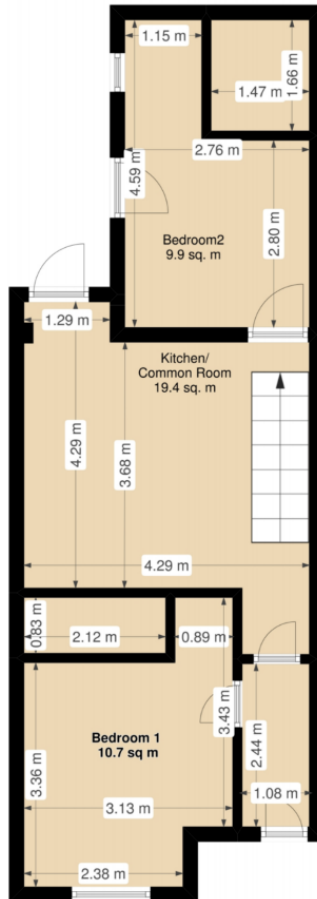
Salford Crescent - 1.5 miles

St Luke's CofE Primary School - 0.3 miles

All Hallows RC High School - 0.4 miles



GF



FF

